

Welcome to



2022

Our Business History



1990

Germany



2000

Serbia



MIND Park,
Foundation

2018

MIND Park
Today

2022



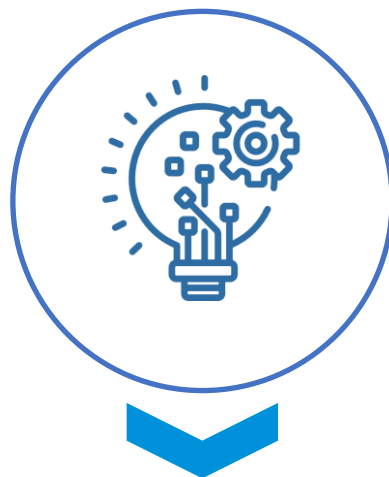
Our Vision:

To become the first integrated Technology, Production and Logistics Hub in South Eastern Europe

Three pillars to achieve our Vision



Location



Technology



People

Three pillars to achieve our Vision



Location



Technology



People

MIND Park 2018-2022

04/2018



Siemens Production Facility

Paint Shop

'Steel' – Production Facility

'Aluminum' – Production Facility

Canteen

Logistics centre
Q1/2023

IME – Autolift
Production Facility

Headquarters

Kindergarten



Our Experienced Infrastructure Team gurantees flawless Supply

Redundant Infrastructure

- Electricity
- Water
- Gas
- Fibre Glas
- Data center



Tailor-made production space according to highest standards

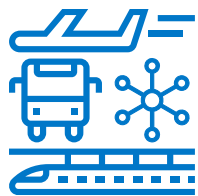
60.000 m²



SIEMENS



MIND Park Connection Solutions at a glance



Highway

High Carrying Capacity

Airport

1,400m runway Q3/24

Rail

Rail connection and dryport Q2/23

Logistics Hub

Logistics center Q1/23



Business Enablement Services

Business set up

- Support in setting up a company in Serbia
- Legal Consulting

Finance and Accounting

Human Resources

- Expat Management
- Recruiting & Headhunting
- Employee Trainings & Development
- Human resource administration
- Payroll



Occupational Health & Safety

- Occupational Safety
- Environmental protection & Waste Management
- Fire Protection

Maintenance & Security

- Facility management
- Cleaning Services: indoor & outdoor areas
- Janitor services
- 24/7 security in MIND Park

IT & Communications Technology

- Hardware & Software: installation, maintenance
- Infrastructure & Network
- Data center



Canteen & Restaurant





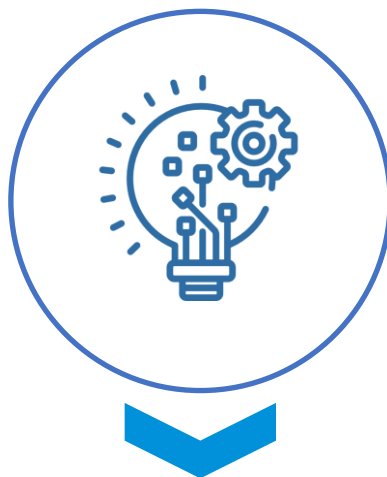
Kindergarten



Three pillars to achieve our Vision



Location



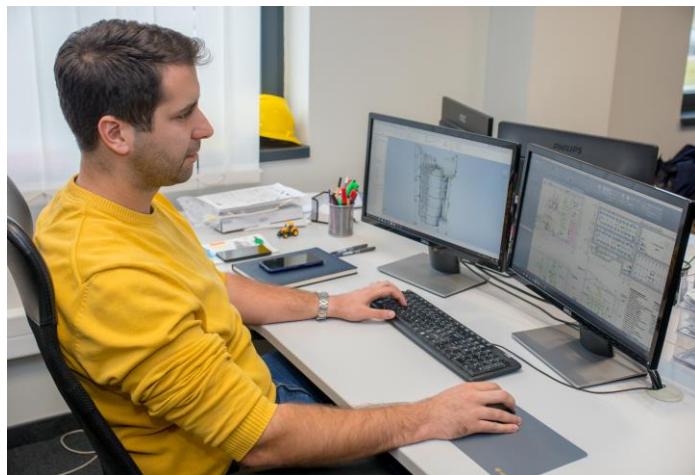
Technology



People

Integrated Production Solution

Engineering



Production



Paint Shop



Our partners who
recognized our quality

ALSTOM

HITACHI
Inspire the Next

BOMBARDIER

SIEMENS

CAF

vallourec

ABB

ŠKODA

Institute for Quality Assurance and R&D

CENTRES

divided in laboratories. Centre for destructive and non-destructive metal tests and R&D centre.



LABORATORIES

for testing and research purposes with latest equipment incl:

- **Chemical laboratory**
- **Mechanical laboratory**
- **Metallographic laboratory**

RESEARCH

focused but not limited to:

- **Rail vehicle industry**
- **Mechanical engineering**
- **Latest technology & sustainability trends**

→ Cooperation with faculties and corporations

CERTIFICATE

Accredited mechanical-metallographic and chemical laboratories in accordance with SRPS ISO / IEC 17025



Science-Technology Park as a Centre for Research and Collaboration



Connecting

- OEMs and Suppliers
- Start-Ups
- Universities

Enabling and Providing

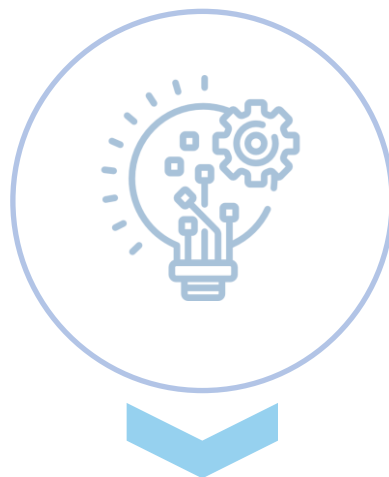
- Resources
- Equipment
- Experts



Three pillars to achieve our Vision



Location

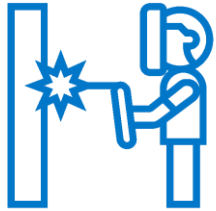


Technology



People

Tailor Made Training and Education for Industry Needs



CNC operator
Welder Aluminum & Steel
Locksmith Operator
Industrial Mechanic



300+ people trained



We assure the Talent Pool with our Cooperation Model with Universities and High-Schools in the Region

Education pool in Kragujevac



University of Kragujevac

- 12 Faculties
- 20.000 Students



- Dual Education Programs incl Internships

Cooperation Model with MIND Park



- Master Mobility Engineering (in development)
- Dual University Program for Economic Engineering (since 2022)
- 30+ Students as Interns continuously

Collaboration in MIND Park



- Case Studies
- Hackathons
- Competitions

Three pillars to achieve our Vision



Location



Technology



People

Future Site Plan

BUSINESS ZONE

- 1 | Headquarters
- 2 | Canteen
- 3 | R&D Centre:
Engineering hub
Education centre
Start-up centre

- 4 | Polyclinic & Diagnostics centre
- 5 | Congress centre with accommodation
- 6 | Kindergarten
- 7 | Public purpose area
- 8 | Sports zone
- 9 | Aero zone

INDUSTRIAL ZONE

- 10 | Facility for Aluminum processing
- 11 | Facility for Steel processing
- 12 | Facility for Painting
- 13 | Production & Maintenance Hub
- 14 | Facility for Siemens Mobility
- 15 | Production Facilities
- 16 | Logistics hub
- 17 | Customs terminal

INFRASTRUCTURE ZONE

- 18 | Infrastructure utilities
- 19 | Rail Connection to public rail infrastructure by 2022
- 20 | Business zone
- 21 | Solar



MIND Park Members





info@mind.rs

www.mind.rs

Aleja Milanović bb,
Kragujevac
Serbia